

JARED COMMERCIAL/PATRIOT PLAZA ST. ROBERTS, MO

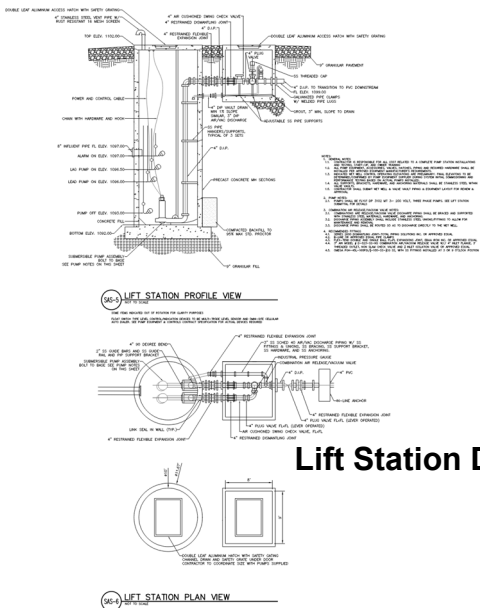
BFA

Year: 2019

Client: Jared Construction

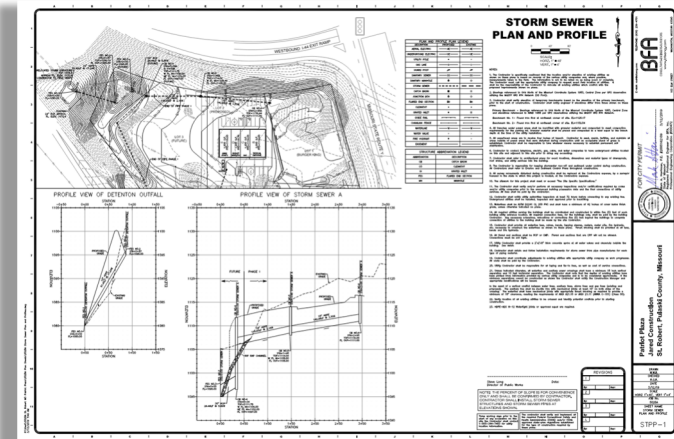
BFA accomplished the draft storm sewer calculations, updated preliminary development plans per City comments, preliminary plat, Signed and Sealed Final Plat and updated pump station detail. The updated pump station detail was updated to match City spec for the valves. The pumps are full vortex, non-clog with 4" solids handling. We prefer the fiberglass wet well and valve box as they will not need to be sealed with tar to handle sewage.

Pump Lift Station Design



Lift Station Design

Project Manager: John Schebaum
Immediate Supervisor: Mark A. Harriman
Engineering & Surveying Services Cost
 Estimated: \$ 25,000 plus reimbursables
 Actual: \$36,653
Construction Project Time Estimated: 60 Days
Construction Cost Estimated: \$63,129



Sub Consultants
 CJD, LLC - Architect